

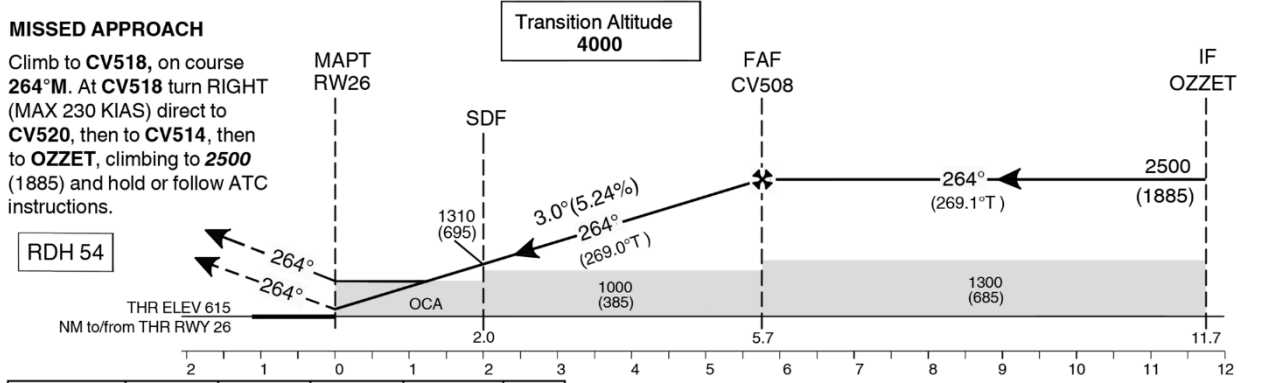
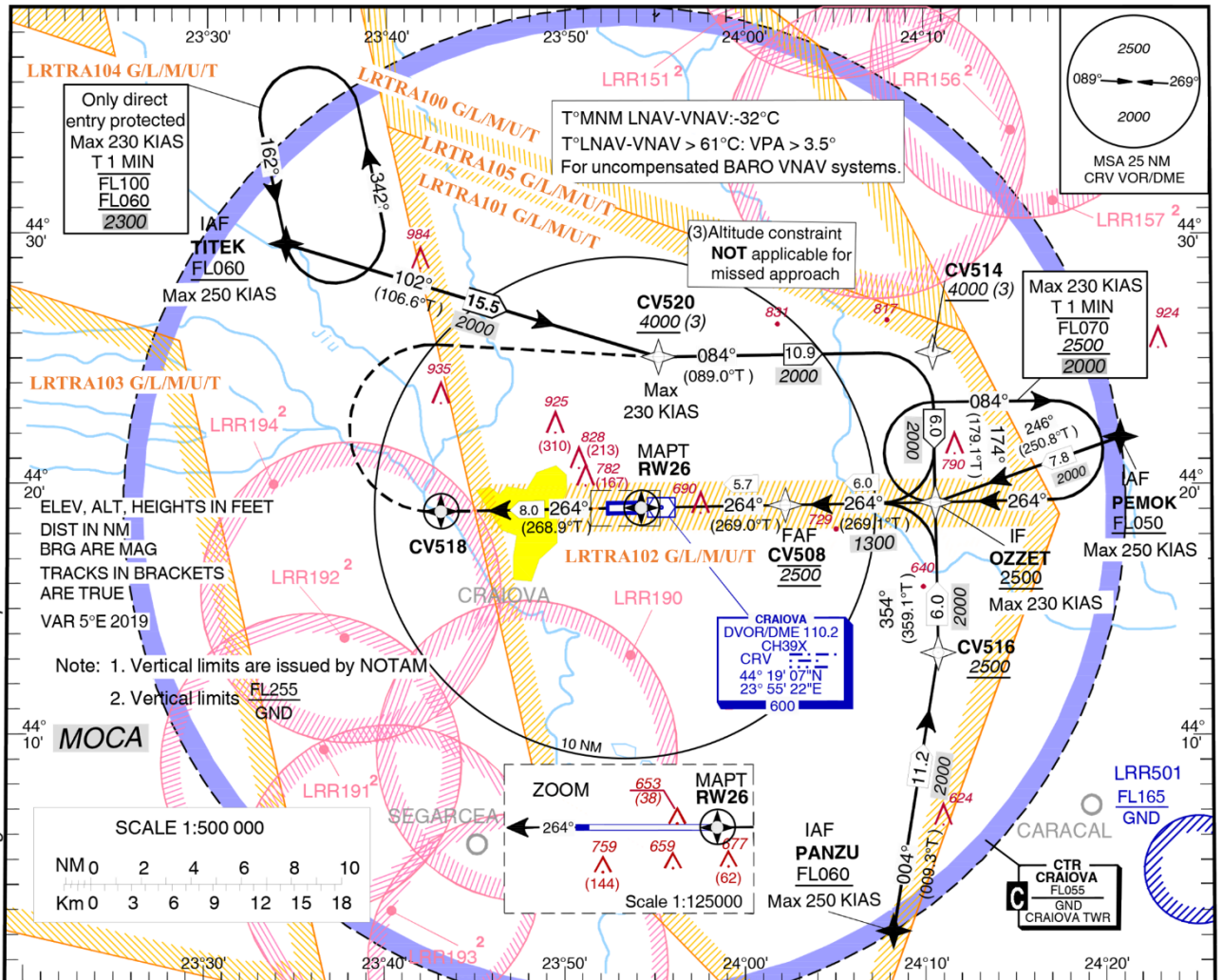
LRCV/ CRA
INSTRUMENT APPROACH CHART - ICAO

CRAIOVA, ROMANIA
RNP RWY 26

AERODROME ELEV. **628 ft**
HEIGHTS RELATED TO THR RWY 26 – ELEV 615 ft

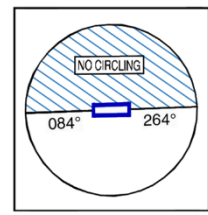
EGNOS
CH 98764 E26A

GRANAT Tower **124.575**
GRANAT Tower ALTN **122.100**



OCA (H)	A	B	C	D	DL	
LPV	783 (168)	795 (180)	803 (188)	813 (198)		
LNAV/VNAV	810 (195)	820 (205)	830 (215)	850 (235)	-	
LNAV	930 (315)				-	
LNAV w/o SDF	1000 (385)				-	
Circling*	1080	1130	1320	1320	-	
Dist to RW26	NM	1	2	3	4	5
Altitudes (Height)	FT	990 (375)	1310 (695)	1620 (1005)	1940 (1325)	2260 (1645)

GS	KT	70	90	100	120	140	160
FAF-MAPT 5.7 NM	MIN:SEC	4:56	3:50	3:27	2:52	2:28	2:09
Rate of descent (5.24%)	FT/MIN	371	478	531	637	743	849



Timing not authorized for defining the MAPT.
* Circling South of airport only.

For data tabulation see verso

LRCV/ CRA

CRAIOVA, ROMANIA

RNP RWY 26

AERONAUTICAL DATA TABULATION

LNAV, LNAV/VNAV and LPV approach to RWY26	
Waypoint Identifier	Coordinates
CV508 (FAF)	44°19'12.1"N 024°02'15.5"E
CV514	44°25'17.8"N 024°10'29.3"E
CV516	44°13'17.9"N 024°10'44.4"E
CV518	44°18'56.7"N 023°43'06.7"E
CV520	44°25'06.9"N 023°55'12.8"E
OZZET (IF)	44°19'17.8"N 024°10'36.9"E
PANZU (IAF)	44°02'12.0"N 024°08'13.0"E
PEMOK (IAF)	44°21'52.9"N 024°20'54.5"E
SDF	44°19'08.2"N 023°57'02.2"E
RW26 (MAPT)	44°19'06.08"N 023°54'15.11"E
TITEK (IAF)	44°29'35.8"N 023°34'25.9"E

RADIO COMMUNICATION FAILURE

a) If RNP RWY 26 instrument flight procedure was assigned and acknowledged, set transponder 7600, proceed according assigned or designated RNP RWY 26 instrument flight procedure. Descending shall be executed in accordance with vertical restrictions specified on chart.

b) If RNP RWY 26 instrument flight procedure was not assigned and acknowledged, set transponder 7600, proceed according to FPL to OZZET and hold 4 minutes not above 4500 ft, then continue the RNP RWY 26 approach. Descending shall be executed in accordance with vertical restrictions specified on chart.

LRCV/ CRA

CRAIOVA, ROMANIA

RNP RWY 26

PROCEDURE CODING

Serial No	APP ID	Path Descriptor	Waypoint ID	Fly Over	Course °M(°T)	Magnetic Variation	Distance (NM)	Turn Direction	Altitude (ft)	Speed (kts)	VPA/TCH (°/ft)	NAV SPEC
010	RNP26	IF	PEMOK			5.0E			+FL050	-250		RNP APCH
020	RNP26	TF	OZZET		246 (250.8)	5.0E	7.8		+2500	-230		RNP APCH
010	RNP26	IF	PANZU			5.0E			+FL060	-250		RNP APCH
020	RNP26	TF	CV516		004 (009.3)	5.0E	11.2		+2500			RNP APCH
030	RNP26	TF	OZZET		354 (359.1)	5.0E	6.0		+2500	-230		RNP APCH
010	RNP26	IF	TITEK			5.0E			+FL060	-250		RNP APCH
020	RNP26	TF	CV520		102 (106.6)	5.0E	15.5		+4000	-230		RNP APCH
030	RNP26	TF	CV514		084 (089.0)	5.0E	10.9		+4000			RNP APCH
040	RNP26	TF	OZZET		174 (179.1)	5.0E	6.0		+2500	-230		RNP APCH
010	RNP26	IF	OZZET			5.0E			+2500	-230		RNP APCH
020	RNP26	TF	CV508		264 (269.1)	5.0E	6.0		@2500	-185		RNP APCH
030	RNP26	TF	RW26	Y	264 (269.0)	5.0E	5.7		@669		-3/54	RNP APCH
010	RNP26	CF	CV518	Y	264 (268.9)	5.0E	8.0					RNP APCH
020	RNP26	DF	CV520			5.0E		R		-230		RNP APCH
030	RNP26	TF	CV514		084 (089.0)	5.0E	10.9					RNP APCH
040	RNP26	TF	OZZET		174 (179.1)	5.0E	6.0		+2500	-230		RNP APCH

LRCV/ CRA

**CRAIOVA, ROMANIA
RNP RWY 26**

LPV FAS DB

Input Data	
Parameters	Values
Operation Type	0
SBAS Provider	1 (EGNOS)
Airport Identifier	LRCV
Runway	26
Runway Letter	0 (None)
Approach Performance Designator	0
Route Indicator	
Reference Path Data Selector	0
Reference Path Identifier	E26A
LTP/FTP Latitude	441906.0750N
LTP/FTP Longitude	0235415.1130E
LTP/FTP Ellipsoidal Height (metres)	228.4
FPAP Latitude	441904.5830N
Delta FPAP Latitude (seconds)	-1.4920
FPAP Longitude	0235221.6610E
Delta FPAP Longitude (seconds)	-113.4520
Threshold Crossing Height	54.0
TCH Units Selector	0 (feet)
Glidepath Angle (degrees)	3.00
Course Width (metres)	105.00
Length Offset (metres)	16
HAL (metres)	40.0
VAL (metres)	35.0

Output Data	
Data Block	10 16 03 12 0C 1A 00 00 01 36 32 05 B6 F5 04 13 92 31 42 0A EC 1C 58 F4 FF A8 89 FC 1C 02 2C 01 64 02 C8 AF 01 24 33 3F
Calculated CRC Value	0124333F